



# USER GUIDE

Please read this user guide thoroughly before use.  
Some features may not be available depending on  
printer models or countries. Please visit our website  
for further technical support.

[www.v4ink.com](http://www.v4ink.com)

[support\\_team@v4ink.com](mailto:support_team@v4ink.com)

BT1601



# Catalogue

## 1. Basic Setup

Replacing Drum Unit .....	1
Replacing Monochrome Toner Cartridge .....	2
Replacing TN315 Series Color Toner Cartridge .....	3
(TN115/TN310/TN315/TN336/TN339)	
Replacing TN210 Series Color Toner Cartridge .....	4
(TN210/TN221/TN225)	

## 2. Support and Troubleshooting

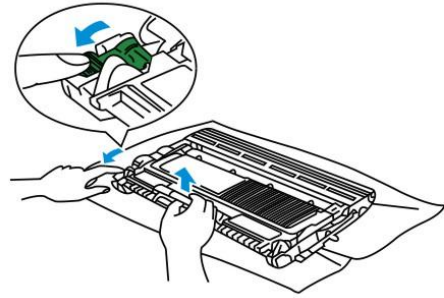
Page yield .....	5
How to clear Brother "Replace/Low Toner" error? .....	5
Storage .....	5
Recycling .....	6
Safety .....	6
Emergency .....	6

## Replacing Drum Unit

1.

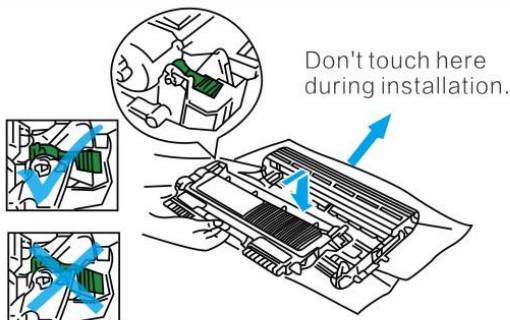
Open the front cover, take out the toner cartridge and drum unit assembly.

2.



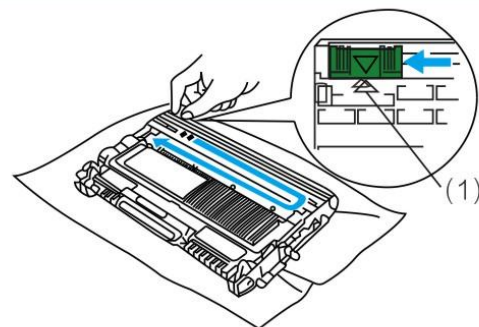
Push down the lock lever and take the used toner cartridge out of the drum unit.

3.



Unpack the drum and remove the black paper. Put the toner cartridge firmly into the new drum unit until it locks into place.

4.

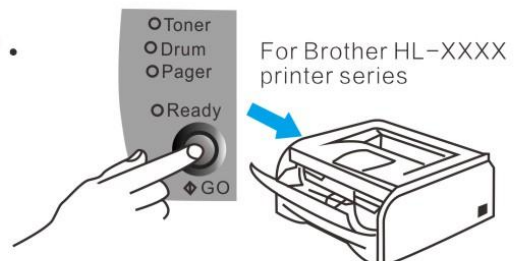


Gently slide the tab from right to left and left to right several times to clean the corona wire. Return the tab to the home position(1).

5.

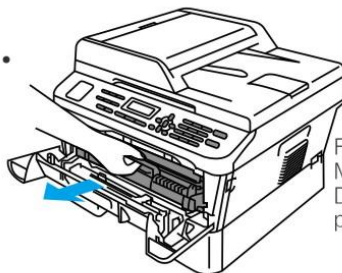
Put the toner cartridge and drum unit assembly into the printer.

6.



Reset the drum counter. With the front cover open, press and hold GO button for about 4 seconds until all the LEDs light up. Once all 4 LEDs are lit, release Go button.

7.



For Brother HL-228X, MFC-XXXX and DCP-XXXX printer series

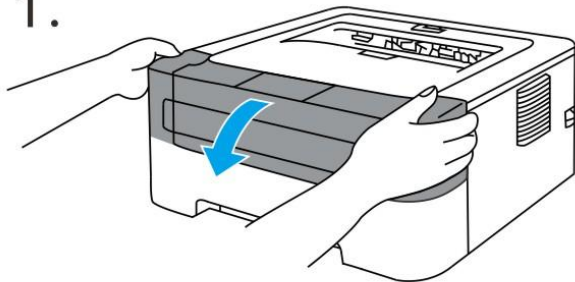
Reset the drum counter. With the front cover open, press CLEAR, to confirm you are installing a new drum unit, then press 1. When the LED shows ACCEPTED, close the front cover.

8.

Close the front cover.

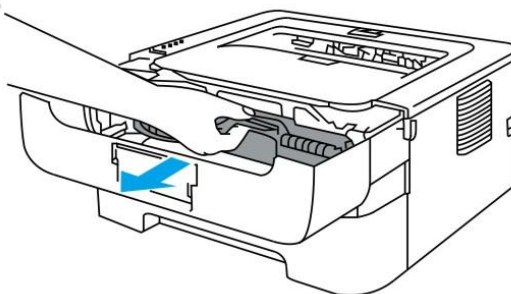
## Replacing Monochrome Toner Cartridge

1.



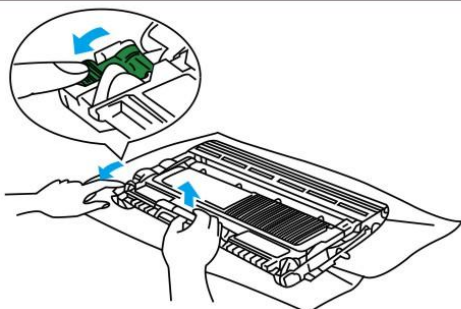
Open the front cover.

2.



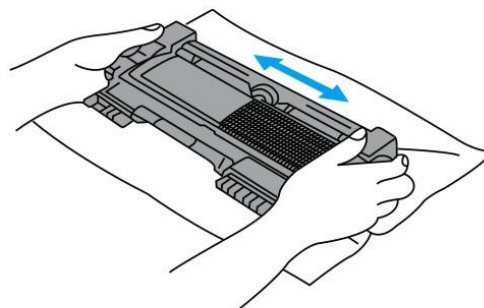
Take out the toner cartridge and drum unit assembly.

3.



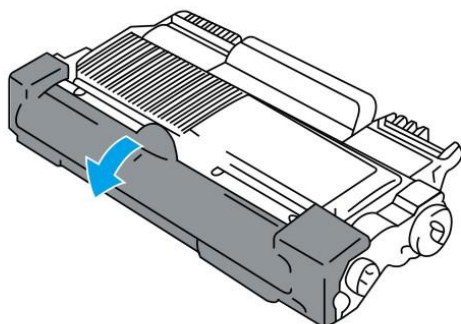
Push down the lock lever and take the used toner cartridge out of the drum unit.

4.



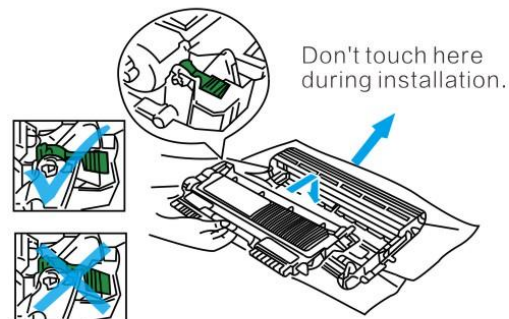
Unpack the new toner cartridge. Gently shake it from side to side to distribute the toner.

5.



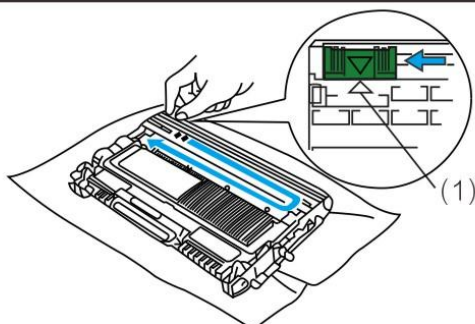
Remove the protective cover.

6.



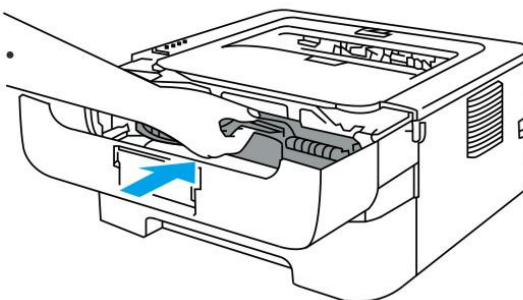
Insert the new toner cartridge into the drum unit until it locks into place.

7.



Gently slide the tab from right to left and left to right several times to clean the corona wire. Return the tab to the home position(1).

8.

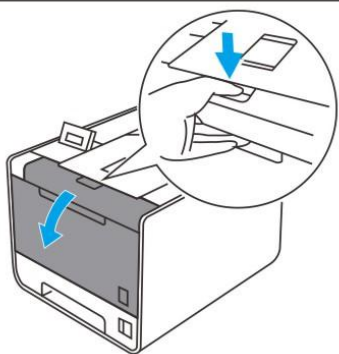


Install the toner cartridge and drum unit assembly into the printer.



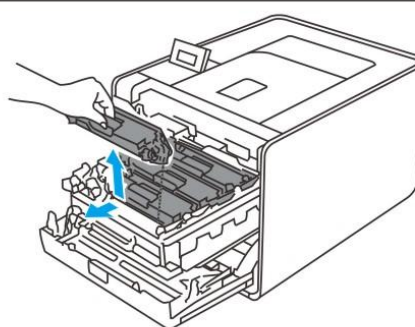
## Replacing TN315 Series Color Toner Cartridge (TN115/TN310/TN315/TN336/TN339)

1.



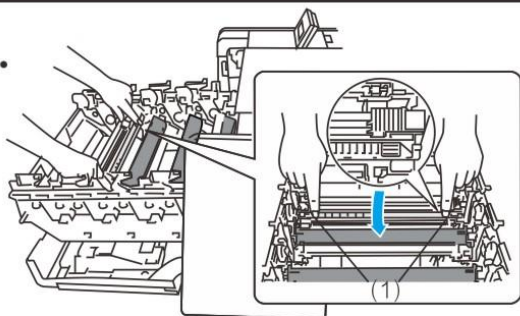
Open the front cover.

2.



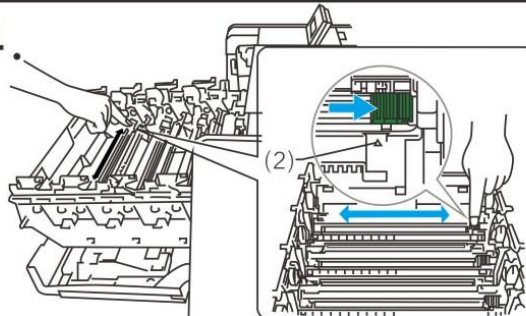
Pull out the drum unit and take out the used toner cartridge assembly.

3.



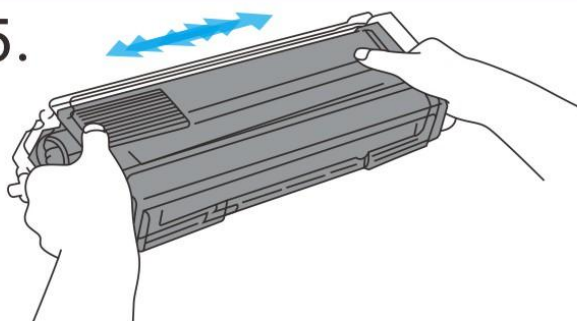
Push and loosen the corona bolt (1), then open the corona cover.

4.



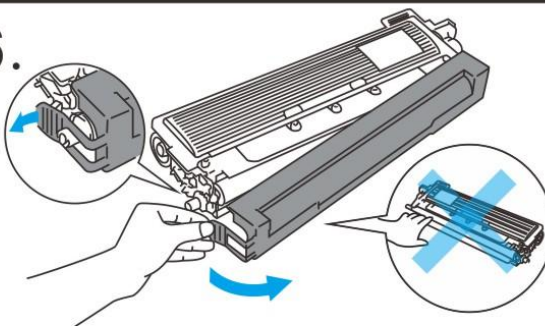
Gently slide the tab from right to left and left to right several times to clean the corona wire. Return the tab to the home position(2).

5.



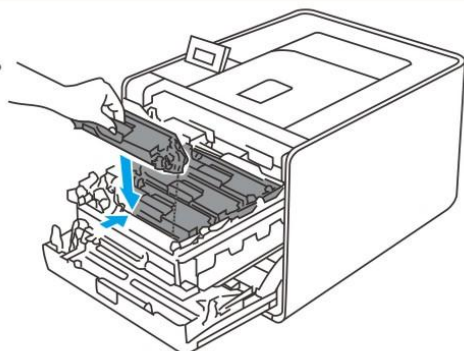
Unpack the new toner cartridge. Gently shake it from side to side to distribute the toner.

6.



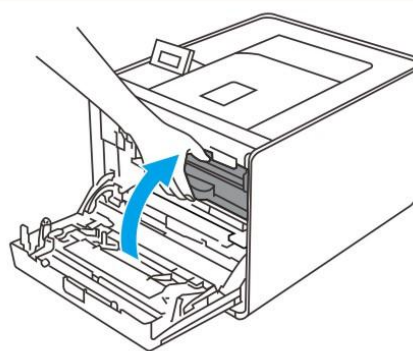
Remove the protective cover. Do not touch the developing roller.

7.



Install the new toner cartridge and drum unit assembly into the printer.

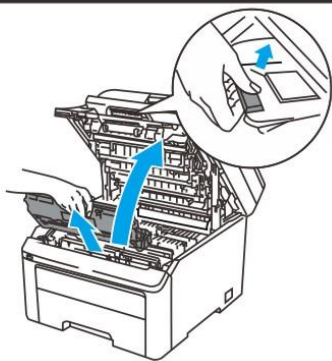
8.



Push back the drum unit and close the front cover.

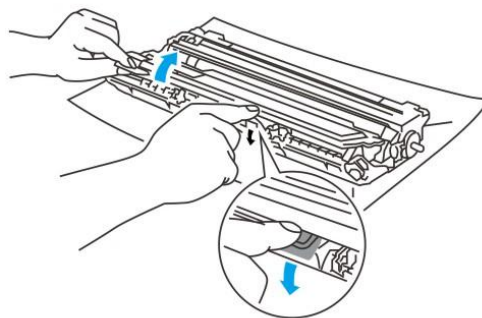
## Replacing TN210 Series Color Toner Cartridge (TN210/TN221/TN225)

1.



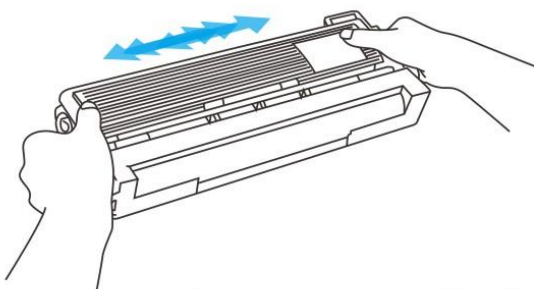
Open the front cover, take out the toner cartridge and drum unit assembly.

2.



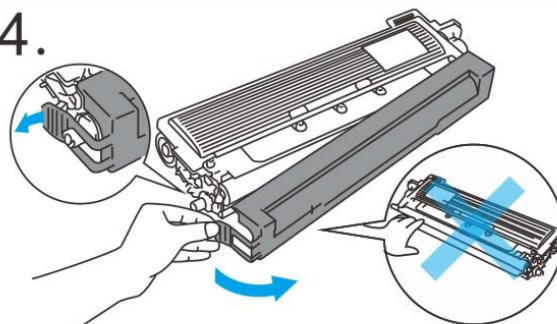
Push down the lock lever and take the used toner cartridge out of the drum unit.

3.



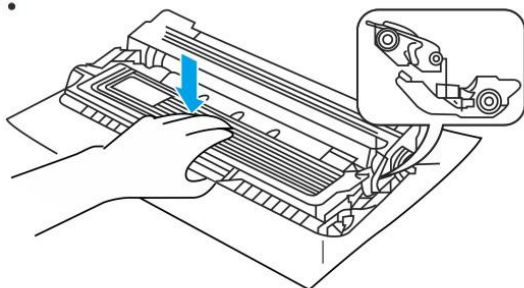
Unpack the new toner cartridge. Gently shake it from side to side to distribute the toner.

4.



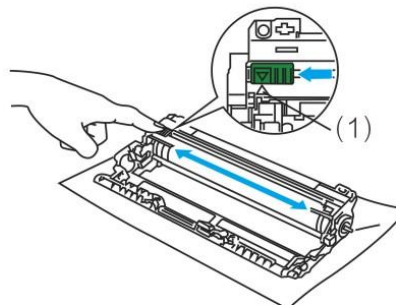
Remove the protective cover. Do not touch the developing roller.

5.



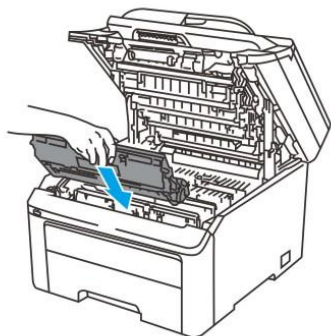
Put the new toner cartridge firmly into the drum unit until it locks into place.

6.



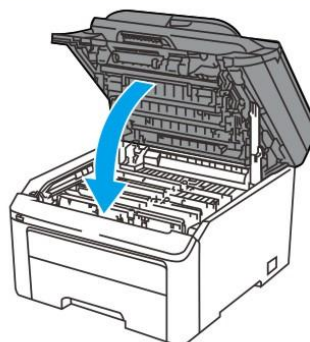
Gently slide the tab from right to left and left to right several times to clean the corona wire. Return the tab to the home position(1).

7.



Install the new toner cartridge and drum unit assembly into the printer.

8.



Close the front cover.



## Page Yield

---

Approximate average yield based on ISO/IEC 19752. Actual yield varies based on content of printed pages and other factors.

## How to clear Brother "Replace/Low Toner" error?

---

For Brother–MFC Multifunction Printers

Step 1: Turn off the printer and turn on;

Step 2: Install the toner cartridge and close the front cover;

Step 3: After installation, open the front cover and press CLEAR, then press 12. At last, close the front cover. This step will clear the background data of the printer.

For Brother–HL Printers/Brother–DCP Series

Step 1: Turn off the printer and install the toner cartridge. Open the front cover again;

Step 2: Press GO button to turn on the printer till the first three lights are on;

Step 3: Release and double press GO button. After that, all lights are off;

Step 4: Press GO button for 6 times;

Step 5: Turn off the printer and close the front cover;

Step 6: Turn it on again to print.

## Storage

---



The toner cartridge should not be exposed to direct sunlight or extreme environment conditions.



Suggested storage temperature: –20°C to 40°C (–4°F to 104°F)

## Recycling

---



This cartridge can be recycled.



Once your cartridge is used up, please contact local recycling company.

## Safety

---



Keep the cartridge away from children. Discard plastic wrapping and bags as soon as the cartridge is installed. The bag may be a hazard to children and may cause suffocation.



DO NOT disassemble the toner cartridge. The custom parts/components can not be replaced or repaired by an end user. Please contact the seller if a malfunction occurs.

## Emergency

---

Any inappropriate contact with toner, please consult doctor for medical advice.

<b>Skin</b>	<ul style="list-style-type: none"><li>* Rinse skin with water.</li><li>* Consult doctor for treatment advice immediately if irritation occurs.</li></ul>
<b>Eyes</b>	<ul style="list-style-type: none"><li>* Remove contact lenses if applicable.</li><li>* Rinse your eyes with water up to 10 minutes.</li><li>* Consult doctor for medical treatment advice immediately, if irritation occurs.</li></ul>
<b>Swallowed</b>	<ul style="list-style-type: none"><li>* Go to hospital for immediately medical treatment advice.</li></ul>